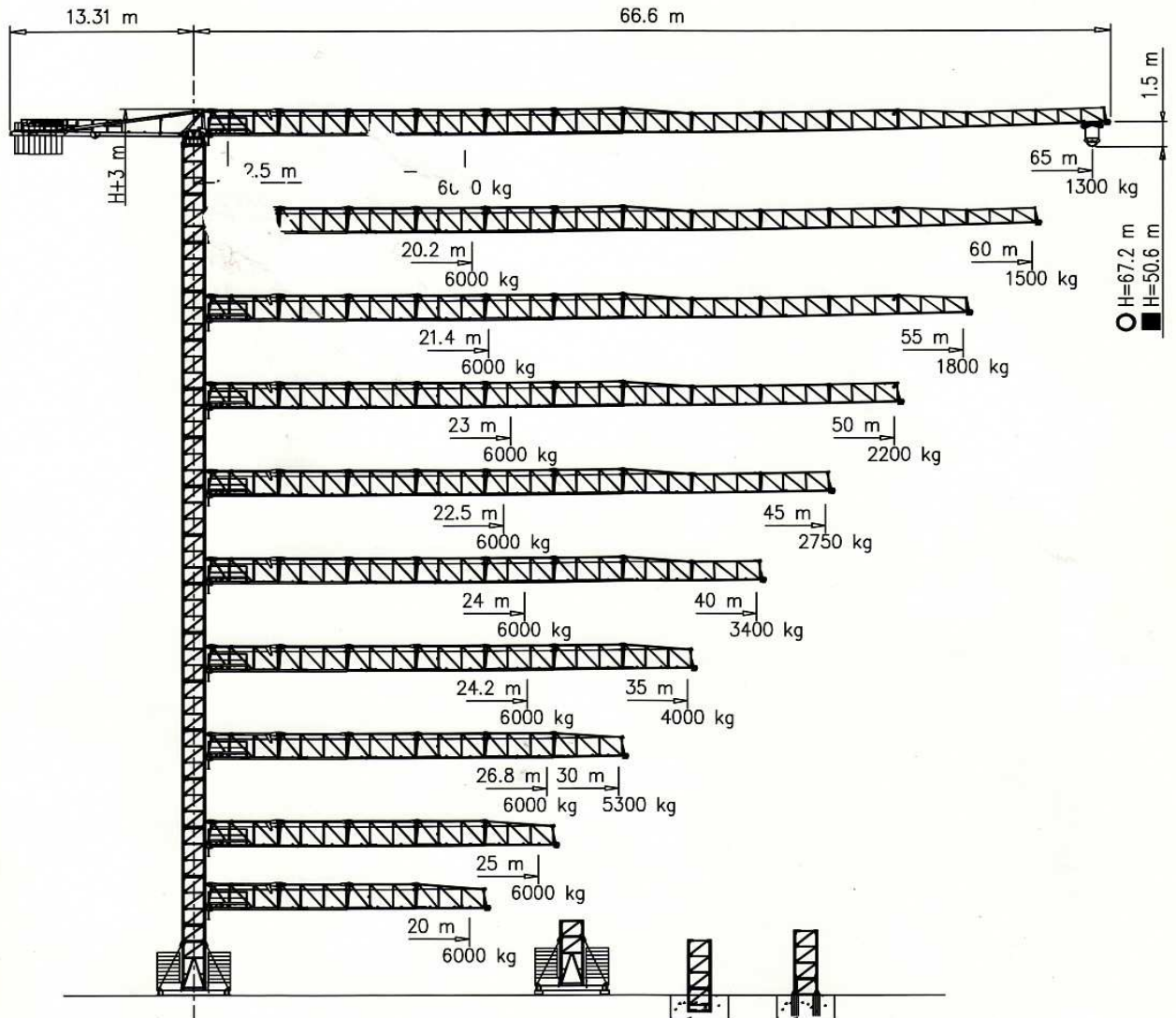




1365 TLX



- S1700 – 1.70x1.70 m
- S2050 – 2.05x2.05 m



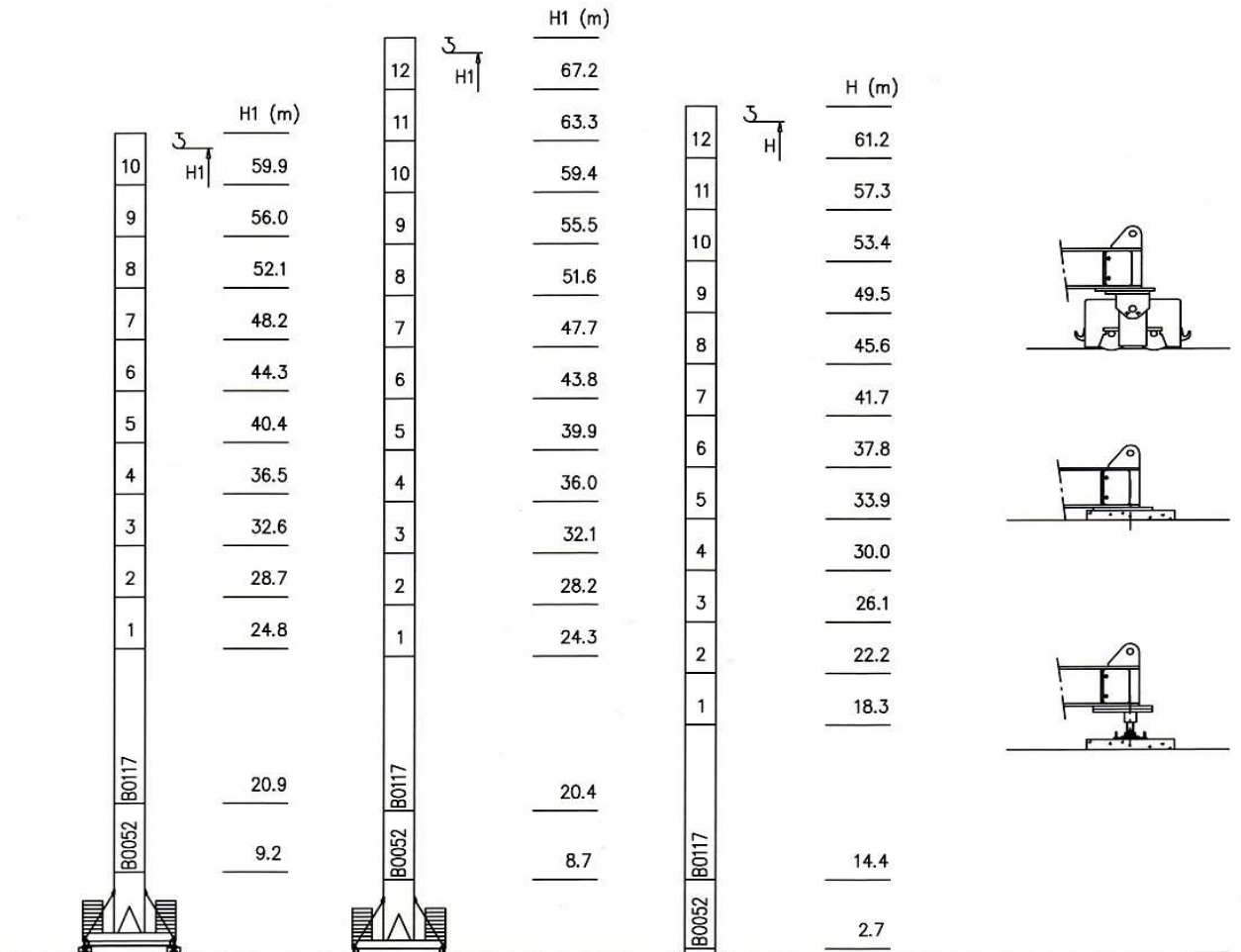


1365 TLX

Torre/Reazioni – Masts/Reactions – Mat/Réactions – Maste/Eckdrücke – Mástil/Reacciones – Tramo/Reacções

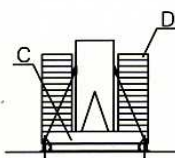
S2050

20 m → 65 m

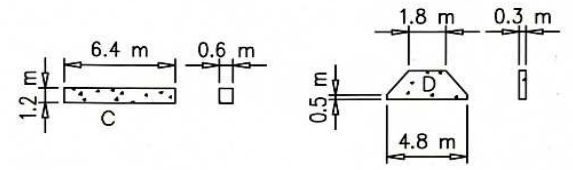


	H=46-58 m	H=0-45 m
R1	90 t	89 t
R2	90 t	88 t
R3	91 t	63 t
M	341 tm	185 tm

Peso zavorra – Ballast weight – Poids du lest – Ballastgewicht – Peso de lastre



H	n*	Tot.
0-55 m	2C+ 16D	102320 kg
56-67 m	2C+ 18D	112460 kg





1365 TLX

Curve di carico – Courbes de charges – Load diagrams – LastKurven – Curvas de cargas

Pmax 3000 kg

	20400 kg	65 m	2.5	36.6	40	45	50	55	60	65	m
			3000	3000	2410	2090	1830	1620	1450	1300	kg
	19200 kg	60 m	2.5	37.5	40	45	50	55	60	m	
			3000	3000	2780	2160	1890	1680	1500	kg	
	19200 kg	55 m	2.5	39.7	40	45	50	55	m		
			3000	3000	2970	2310	2030	1800	kg		
	18000 kg	50 m	2.5	42.4	45	50	m				
			3000	3000	2500	2200	kg				
	16800 kg	45 m	2.5	41.8	45	m					
			3000	3000	2750	kg					
	15600 kg	40 m	2.5	40	m						
			3000	3000	kg						
	14400 kg	35 m	2.5	35	m						
			3000	3000	kg						
	13200 kg	30 m	2.5	30	m						
			3000	3000	kg						
	10800 kg	25 m	2.5	25	m						
			3000	3000	kg						
	7200 kg	20 m	2.5	20	m						
			3000	3000	kg						

Pmax 6000/3000 kg

	20400 kg	65 m	2.5	19.7	20	25	30	35	36.6	40	45	50	55	60	65	m
			6000	6000	5910	4620	3770	3160	3000	2410	2090	1830	1620	1450	1300	kg
	19200 kg	60 m	2.5	20.2	25	30	35	37.5	40	45	50	55	60	m		
			6000	6000	4750	3880	3250	3000	2780	2160	1890	1680	1500	kg		
	19200 kg	55 m	2.5	21.4	25	30	35	39.7	40	45	50	55	m			
			6000	6000	5060	4130	3470	3000	2970	2310	2030	1800	kg			
	18000 kg	50 m	2.5	23	25	30	35	40	42.4	45	50	m				
			6000	6000	5450	4450	3750	3210	3000	2500	2200	kg				
	16800 kg	45 m	2.5	22.5	25	30	35	40	41.8	45	m					
			6000	6000	5350	4380	3680	3160	3000	2750	kg					
	15600 kg	40 m	2.5	24	25	30	35	40	m							
			6000	6000	5740	4700	3960	3400	kg							
	14400 kg	35 m	2.5	24.2	25	30	35	m								
			6000	6000	5800	4750	4000	kg								
	13200 kg	30 m	2.5	26.8	30	m										
			6000	6000	5300	kg										
	10800 kg	25 m	2.5	25	m											
			6000	6000	kg											
	7200 kg	20 m	2.5	20	m											
			6000	6000	kg											