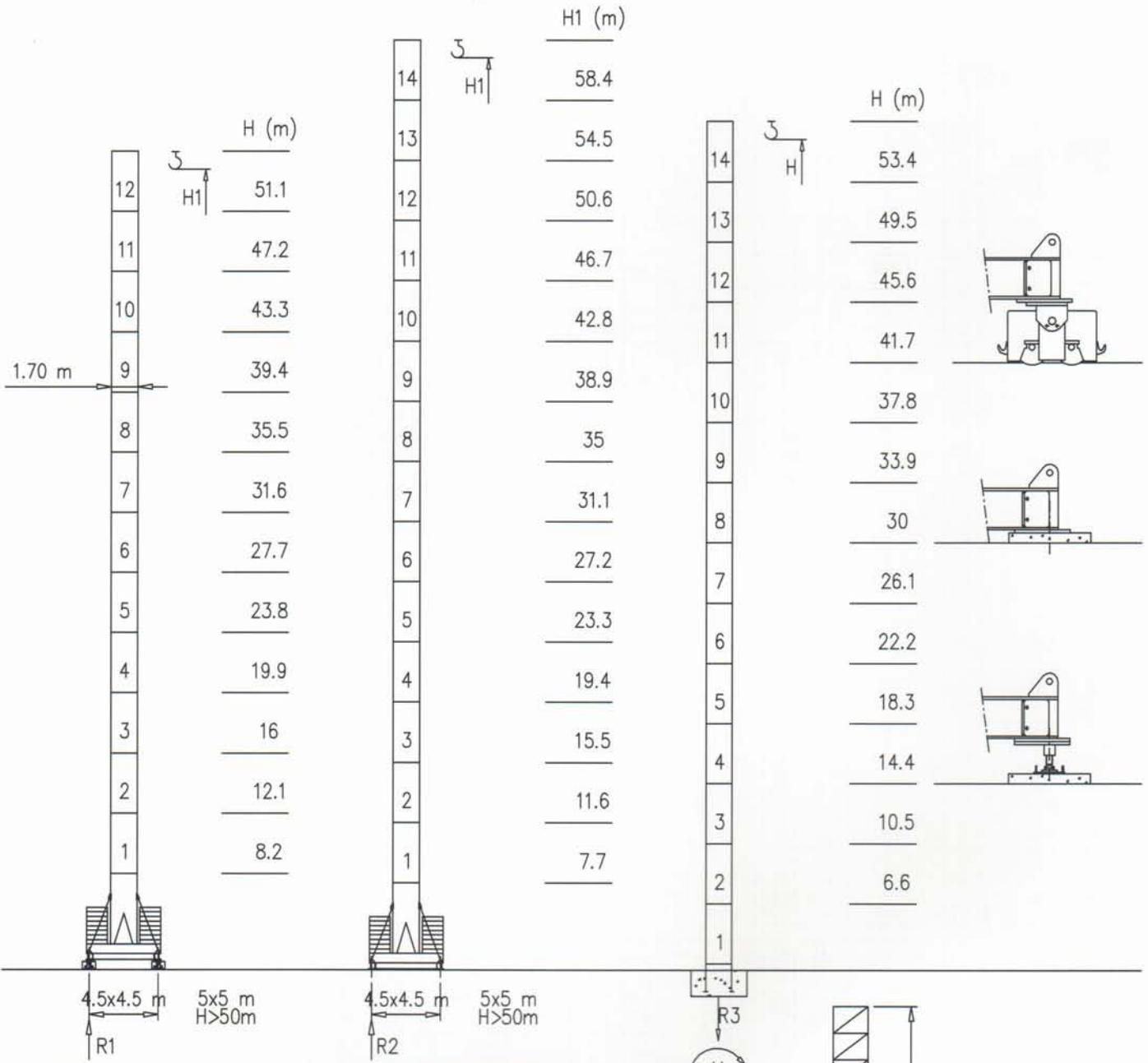


- S1210 - $1.21 \times 1.21\text{ m}$
- S1700 - $1.70 \times 1.70\text{ m}$

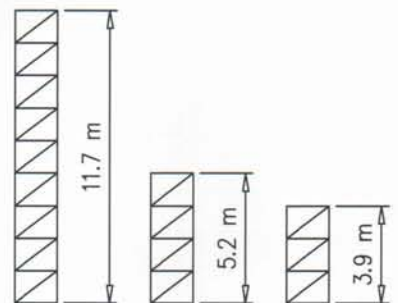
Torre/Reazioni - Masts/Reactions - Mat/Réactions - Maste/Eckdrücke - Mástil/Reacciones - Tramo/Reacções

S1700

15 m → 47.5 m

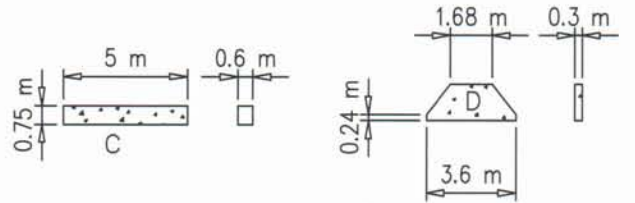


H=46-58 m		H=36-45 m		H=0-35 m	
R1	106 t	R1	72 t	R1	65 t
R2	106 t	R2	72 t	R2	65 t
R3	95 t	R3	61 t	R3	54 t
M	336 tm	M	194 tm	M	156 tm



Peso zavorra - Ballast weight - Poids du lest - Ballastgewicht - Peso de lastre

H	n*	Tot.
0-35 m	2C+ 18D	60800 kg
36-45 m	2C+ 22D	72000 kg
46-58 m	2C+ 32D	105000 kg



Curve di carico – Courbes de charges – Load diagrams – LastKurven – Curvas de cargas

Pmax 2500 kg

	12000 kg		2	28.5	30	32.5	35	37.5	40	42.5	45	m	47.5	m
		45/47.5 m	2500	2500	2360	2120	1900	1720	1560	1420	1300	kg	1000	kg
	10800 kg		2	27.5	30	32.5	35	37.5	40	m				
		40 m	2500	2500	2400	2160	1940	1760	1600	kg				
	10800 kg		2	30			32.5	35	m					
		35 m	2500	2500			2320	2200	kg					
	9600 kg		2	30			m							
		30 m	2500	2500			kg							
	8400 kg		2	25			m							
		25 m	2500	2500			kg							
	7200 kg		2	20			m							
		20 m	2500	2500			kg							
	4800 kg		2	15			m							
		15 m	2500	2500			kg							



Pmax 3000 kg

	12000 kg		2	24.5	27.5	30	32.5	35	37.5	40	42.5	45	m	47.5	m
		45/47.5 m	3000	3000	2650	2360	2120	1900	1720	1560	1420	1300	kg	1000	kg
	10800 kg		2	25	27.5	30	32.5	35	37.5	40	m				
		40 m	3000	3000	2690	2400	2160	1940	1760	1600	kg				
	10800 kg		2	28.5	30	32.5	35	m							
		35 m	3000	3000	2500	2320	2200	kg							
	9600 kg		2	29	30	m									
		30 m	3000	3000	2800	kg									
	8400 kg		2	25			m								
		25 m	3000	3000			kg								
	7200 kg		2	20			m								
		20 m	3000	3000			kg								
	4800 kg		2	15			m								
		15 m	3000	3000			kg								



Pmax 4000/2000 kg

	12000 kg		2	19.5	22.5	25	27.5	30	32.5	35	37.5	40	42.5	45	m	47.5	m
		45/47.5 m	4000	4000	3370	2970	2650	2360	2120	1900	1720	1560	1420	1300	kg	1000	kg
	10800 kg		2	20	22.5	25	27.5	30	32.5	35	37.5	40	m				
		40 m	4000	4000	3520	3100	2690	2400	2160	1940	1760	1600	kg				
	10800 kg		2	22.5	25	27.5	30	32.5	35	m							
		35 m	4000	4000	3560	3180	2870	2320	2200	kg							
	9600 kg		2	23	25	27.5	30	m									
		30 m	4000	4000	3730	3360	2800	kg									
	8400 kg		2	24	25	m											
		25 m	4000	4000	3900	kg											
	7200 kg		2	20			m										
		20 m	4000	4000			kg										
	4800 kg		2	15			m										
		15 m	4000	4000			kg										

